

**UNIVERSITY OF SWAZILAND
FACULTY OF HUMANITIES
DEPARTMENT OF HISTORY
SEMESTER I EXAMINATION PAPER
DECEMBER 2011**

COURSE NAME : TOPICS IN WORLD HISTORY TO 1500

COURSE CODE : H101

TIME ALLOWED : 2 HRS

INSTRUCTIONS : 1. CHOOSE AND ANSWER TWO (2) QUESTIONS

2. ALL QUESTIONS CARRY EQUAL MARKS

**3. INDICATE YOUR PROGRAMME ON THE OUTER
COVER OF THE ANSWER BOOKLET.**

**THIS PAPER IS NOT TO BE OPENED UNTIL PERMISSION HAS BEEN
GRANTED BY THE INVIGILATOR.**

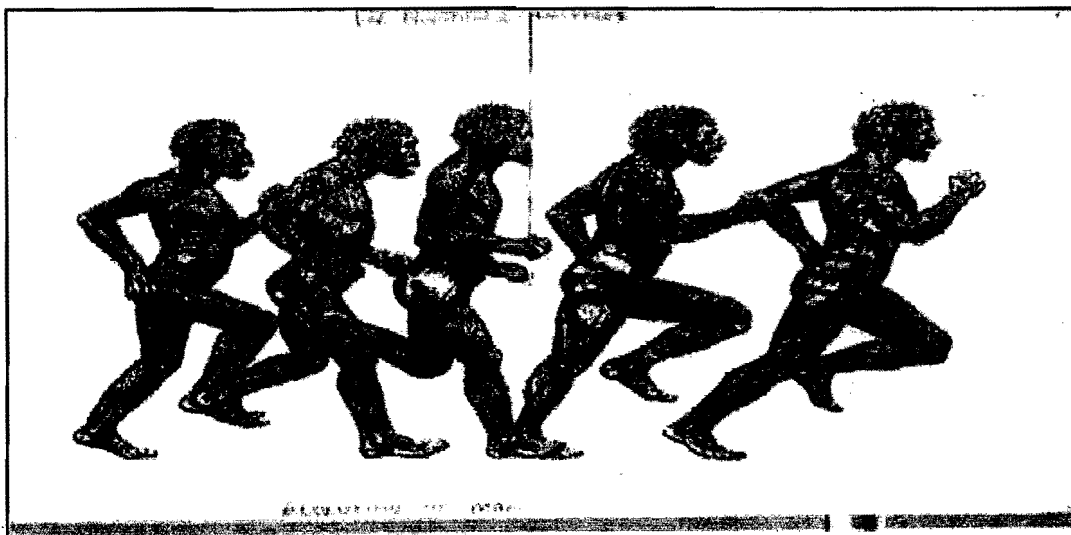
CHOOSE AND ANSWER TWO (2) QUESTIONS:

Each question is worth 25 marks

QUESTION 1

“Archaeology, linguistic evidence and oral traditions are some of the important disciplines that assist historians in compiling information for a history study.” Give full details of the definition and the role played by each discipline in compiling historical evidence. For each case give two limitations historians can encounter while engaging with these disciplines.

QUESTION 2



Carefully study each of the above characters then give the scientific name of each character. From characters 2 to 5 state 4 of their physical features and explain the evolution process and the Cultural Revolution from one stage to the other.

QUESTION 3

State the religious and economic characteristics of the Old Egyptian Kingdom up to the 1st Intermediate Kingdom. State the events during the 1st Intermediate Kingdom that changed the religious connection of the Pharaoh to the whole lifestyle of the Egyptians.

QUESTION 4

“Push and pull factors facilitated the Kushites move to Meroe.” Using both economic and political factors explain how they contributed to the formation of the state of Meroe. For each factor state whether it was a pull or push factor.

QUESTION 5

Analyse in comparison the **social** aspects of the Ancient Mayan and Egyptian Civilizations. Which of the two do you think has the most striking religious features?